

FaSTARprep96

Automated Nucleic Acid Extraction System



FaSTARprep96

Automated Nucleic Acid Extraction System



High Throughput

- Simultaneous processing of up to 96 samples within 20 minutes
- High recovery rate ($\geq 98\%$)

1



Magnetic Bead Technology

- Application of magnetic beads and spin extraction technology
- Prevention of contamination

2



Various Function

- Blocking and preventing contamination through HEPA Filter & UV Lamp operation

3

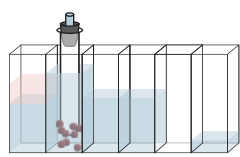


User Friendly

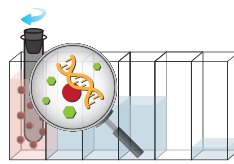
- Increase customer convenience by applying customer-specific & sample type protocols

4

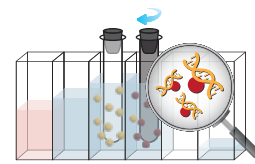
Extraction Principle



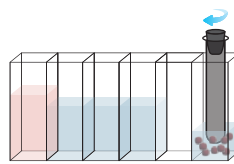
Bead capture



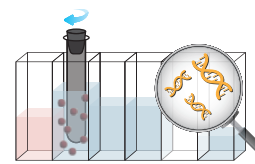
Lysis/Binding



Serial Washing



Elution



Bead release

Specification

Parameter	Specification
Model	FaSTARprep96 Automated Nucleic Acid Extraction System
Cat. No.	IMC-FAST-P96D
Certificate	MFDS 23-1197
Throughput	96 Samples
Collection efficiency of the Magnetic bead	≥98%
Processing Volume	50~100uL
Heating Temperature	RT to 120°C
Operation Interface	Touch Panel
Carry-over contamination control	HEPA filter, Built-in UV lamp
Cross contamination control	Movement control
Dimensions (W x L x H)	510 x 500 x 480 mm
Weight	48kg
Power Requirement	AC110~240V, 50/60Hz, 600W
Operation Temperature	10~40°C
Operation Relative Humidity	<80%



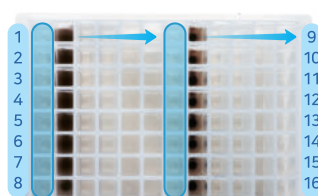
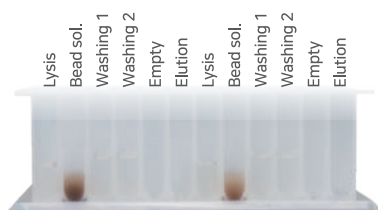
Extraction Kit

FaSTAR-XT PGS DNA/RNA Kit, an exclusive extraction product for FaSTARprep96, enhances user convenience as all reagents necessary for experiments are dispensed. When the equipment is operating, the magnetic bead moves and automatically extracts nucleic acids preventing possible contamination during experiments and minimizing errors between experimenters.

Product	FaSTAR-XT PGS DNA/RNA Kit
Cat. No.	17602-96
Size	96 tests
Application	Purify viral DNA/RNA
Specimen	Cells, Swab, Blood, etc



Well Plate Type (96T)



Kit Contents

- Prefilled well plates : 6EA
- Mixing sleeve unit : 12EA
- Proteinase K, lyophilized : 2vial
- DNase/RNase free water : 3vial



it is LiliF®

LiliF® Diagnostics, which encompasses
humans and animals and covers state-of-the-art
molecular diagnostics(MDx) and rapid diagnostics(RDT)
provides Relief and Belief to our customers.